



Vertical Technology Ltd  
 INDUSTRIAL ROPE ACCESS SPECIALISTS  
 Unit 15  
 The Wren Centre  
 Westbourne Road  
 Emsworth  
 Hampshire PO10 7SU  
 Company Reg No: 2881894  
 T: 01243 377599  
 F: 01243 377227  
 E: enquiry@vertical-technology.com  
 W: www.vertical-technology.com

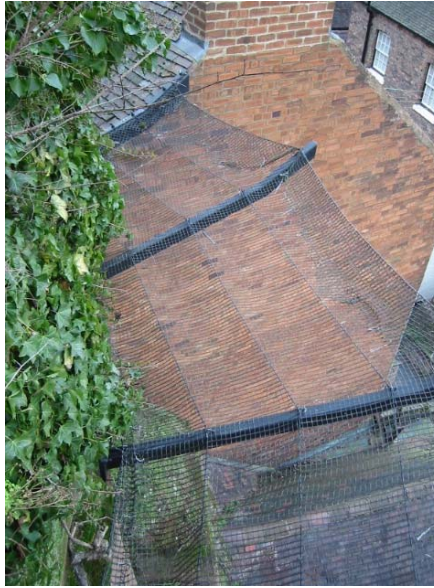
**St Mary's Steps, Bridgnorth**

**The Problem**

The row of cottages and shops along St Mary's Steps has been build right below a 30m high old red sandstone cliff. It was not just periodic rock falls that broke roof slates and risked personal injury, but also objects thrown from the cliff top walk by less sociable types.

**The Solution**

WS Atkins Telford office designed a series of 7 overlapping cantilevered catch fences to be constructed at half height along a 100m length. Vertical Technology had the various types of post fabricated and the team drilled holes for the 3.0m fixing anchors often only a few metres above fragile slate roofs. Access from below was very limited and all plant and materials were lowered down the steep slopes and rock faces above. Extreme care was needed to ensure nothing was dropped and the 60 odd posts were lowered and assembled without incident.



Since completion over 10 years ago, Vertical Technology has periodically been called back to clear rock falls from the fence and on one occasion, a moped!

